



EUPHORIA™

EPS8

8-Inch Low Profile Amplified Subwoofer

USER MANUAL

Installation Instructions | Owners Manual

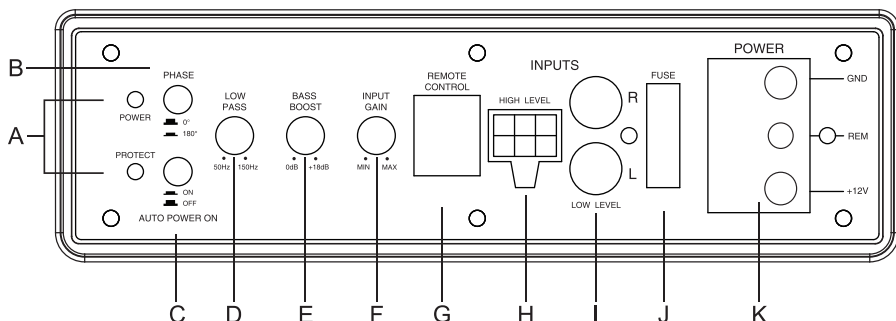


DB Research L.L.P. - 302 Hanmore Industrial Parkway - Harlingen, TX 78550

Ph: (877) 787-0101 - Fax: (956) 421-4513 - www.dbdrive.net

Due to continuous improvement of the product, specifications are subject to change without notice.

Panel controls and features



A. POWER STATUS LED

This bi-color LED glows green when power is on and no problems are present. If one of the protection circuits comes on, it will change to red.

B. PHASE SHIFT

Use this switch to help compensate for time alignment problems in the system. Such problems usually result from having the subwoofer at a different distance from the listener than the other speakers in the system.

C. AUTO POWER ON

The AUTO POWER ON (ON/OFF) is for high level (speaker-level) connections. When the switch is in the "ON" position, the subwoofer will AUTO POWER ON when there is signal input. If the amplifier detects no signal input, the amplifier will auto power off. If you prefer to use the remote turn on/off connection, leave switch in the "OFF" position.

D. LOW PASS FILTER

This control allows you fine tune the frequency range you want the subwoofer amplifier will receive.

E. BASS BOOST

The BASS BOOST feature will increase the sound level in the bass frequencies.

F. INPUT GAIN CONTROL

After you have installed your system, turn this control to minimum.

Turn the head unit on (and the subwoofer will turn on via the remote connection). Turn the head unit volume to about 2/3 full level.

Slowly turn up the subwoofer input gain control until you hear a small amount of distortion. Then reduce the level until the distortion is completely gone. Level the control at this setting.

G. REMOTE LEVEL CONTROL

Attach the included remote level control to control the volume level of the subwoofer independently.

H. HIGH LEVEL (speaker level) INPUTS

If your head unit does not have RCA outputs you can use the speaker outputs for the audio source for the subwoofer. Use the supplied cable and wire harness and connect the outputs properly as shown in the connection diagram in this manual.

I. LOW LEVEL RCA INPUTS

If RCA outputs are present on your head unit Low level inputs are the recommended way to introduce the audio signal into your subwoofer.

J. FUSE

Do not use a fuse with a different value other than the original value.

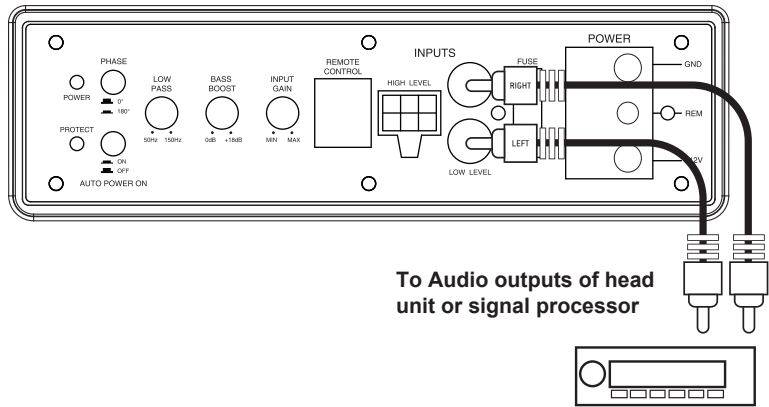
K. POWER INPUT TERMINAL

Low Level Input Wiring

Low-level (RCA) input wiring is preferred for best audio performance. Most trunk or hatchback installations will require a 15-20 feet RCA cable, while pickup trucks and under-seat installations will require a 6-12 feet RCA cable. Always use a high quality cable.

NOTE: Do not connect BOTH the high level and low level inputs from your receiver to your amplifier at the same time!

Fig.1

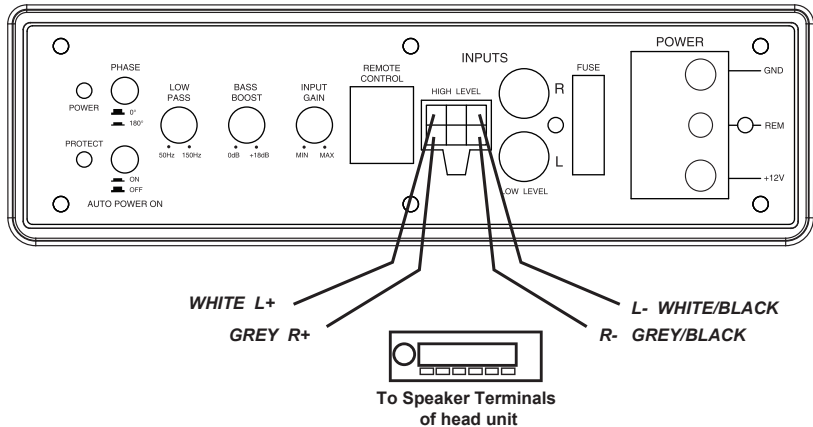


High Level Input Wiring

The high level input(s) should only be used when your receiver lacks RCA outputs. If the RCA outputs are not present, connect the speaker outputs from the receiver to the high level input connector of the amplifier. Be sure to observe polarity to avoid audio phase problems.

NOTE: Do not connect BOTH the high level and low level inputs from your receiver to your amplifier at the same time!

Fig.2



Power Connections

Connect the ground terminal to the closest point on the chassis of the vehicle. Keep this ground wire to less than 12" (30.5 cm) in length. Use 8 gauge (or heavier) wire.

Connect the remote terminal to the remote output of head unit using 16 gauge (or heavier) wire.

Connect an fuse holder within 18" (45 cm) of the car battery, and run 8 gauge (or heavier) cable from this fuse to the amplifier location. Then connect the fuse holder to the "BATT+" (+12V) connection on the subwoofer rear panel.

Fig.3

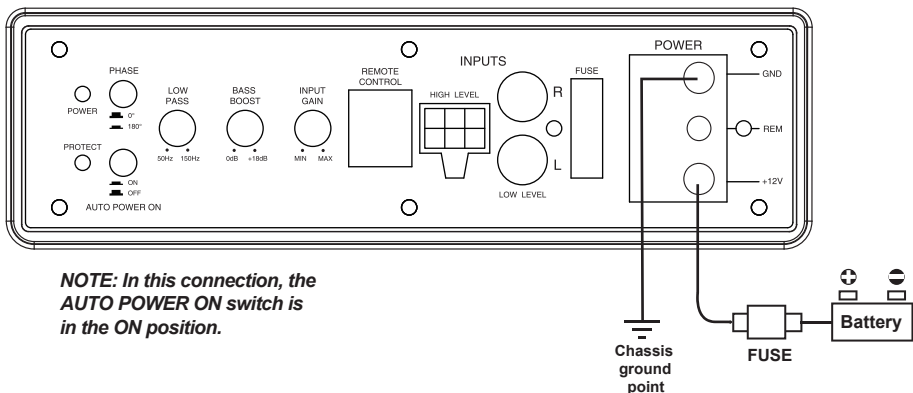
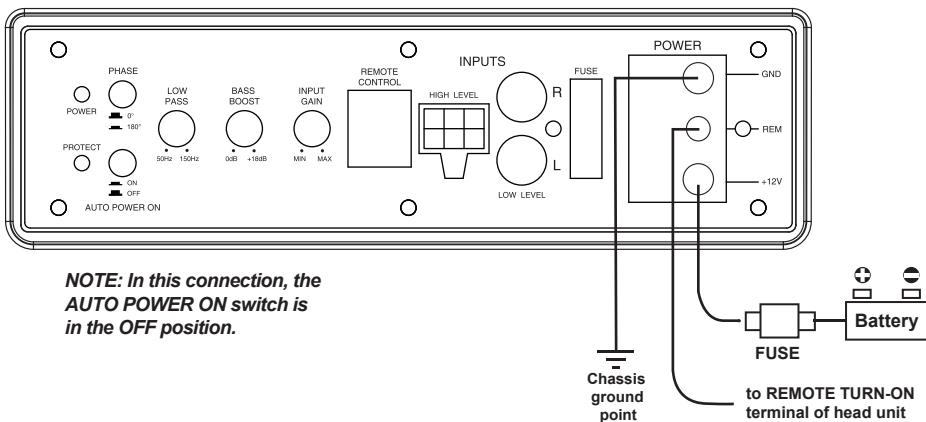
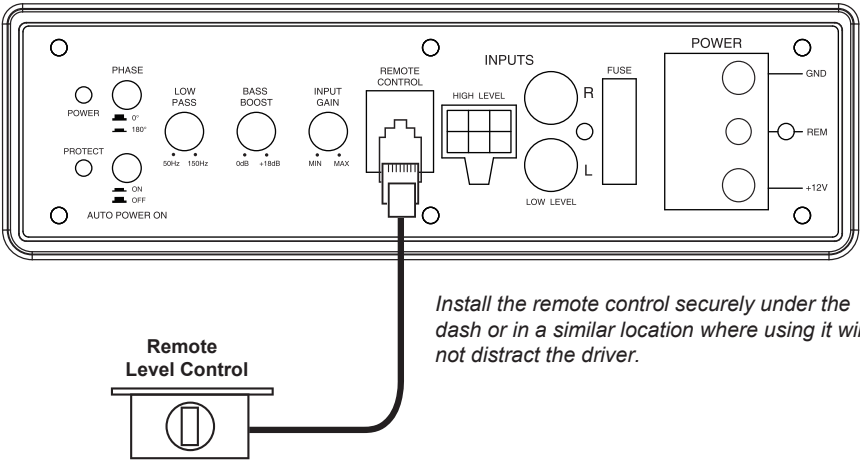


Fig.4



Remote Level Control Connection

Fig.5



MODEL:	EPS8
RMS power	225W
THD	<0.4%
Signal-to-noise ratio	>90dB
Frequency response	20Hz - 150Hz
Input sensitivity, high level	0.5V
Input sensitivity, low level	110mV
Low Pass Filter	50Hz - 150Hz
Bass Boost	0 to + 18dB
Subsonic Filter	20Hz
Fuse rating	25A
Passive Radiator	185x52mm(2PCS)
Subwoofer	8inch,2ohm
Dimensions(L x W x H) mm	345 x 245 x 70

All specifications subject to change without notice.

Troubleshooting

If you experience operation or performance problems with this product, compare your installation with the electrical wiring diagram on the previous pages. If problems persist, read the following troubleshooting tips which may help eliminate the problems.

SYMPTOM	POSSIBLE REMEDY
Products will not power up.	<i>Check to make sure you have a good ground connection. Check that the Remote Input (Turn-On) has at least 5VDC. Check that there is battery power on the (+) terminal. Check that there is at least 12v. Check all fuses, replace if necessary. Make sure that the Protection LED is not illuminated. If it is lit, shut off the amplifier briefly, and then repower it.</i>
Protection LED comes on when amplifier is powered up	<i>Turn down the volume control on the head unit to prevent overdriving. Check that there is good air circulation around the amp.</i>
No output.	<i>Check that all fuses are OK. Check that unit is properly grounded. Check that the Remote Input (Turn-On) has at least 5VDC. Check that the RCA audio cables are plugged into the proper inputs.</i>
Low output.	<i>Reset the Level Control. Check the Crossover Control settings.</i>
High hiss in the sound.	<i>Disconnect all RCA inputs to the power sub's control panel. If the hiss disappears, then plug in the component driving the amplifier and unplug its inputs. If the hiss disappears at this point, go on until the faulty/noisy component is found. It is best to set the amplifier's input level control as low as possible. The best subjective signal-to-noise ratio is achieved in this manner. Try to set the head unit as high as possible (without distortion)</i>
Squealing noise is present.	<i>Check for improperly grounded RCA interconnects.</i>
Distorted sound.	<i>Check that the Input Level Control is set to match the signal level of the head unit.</i>
Engine noise (static type)	<i>This is usually caused by poor quality RCA cables, which can pick up radiated noise. Use only the best quality cables, and route them away from power cables.</i>
Engine noise (alternator whine)	<i>Check that the RCA grounds are not shorted to the vehicle chassis Check that the head unit is properly grounded.</i>



EUPHORIA™

LIMITED WARRANTY

DB Drive warrants any Euphoria products purchased in the U.S.A. from an authorized DB Drive Euphoria dealer. All products are warranted to be free from defects in material and workmanship under normal use and service for a period of one (1) year when purchased over the counter. This warranty applies to the original purchase only.

DB Drive will either repair or replace (as its option) any unit that had been found to be defective and under warranty provided the defect occurs within the one (1) year warranty period.

DB Drive Euphoria products installed by an authorized DB Drive Euphoria dealer will receive (2) years of warranty.

Either limited warranty periods do not extend to units having been subjected to misuse, abuse, neglect, or accident. In DB Drive's judgment, products that show evidence of having been altered, modified, or serviced without DB Drive's authorization, will be ineligible under this warranty.

To obtain warranty services please contact your retailer or visit our website at www.dbdrive.net for more details.



EUPHORIA™

GARANTÍA LIMITADA

DB Drive™ garantiza cualquier Euphoria producto comprado en USA de un vendedor autorizado por DB Drive™ Euphoria. Todos los productos están garantizados de no tener defectos en material y manufactura bajo un uso normal y servicio por un período de un año a partir de la fecha de la compra.

DB Drive™ reparará o reemplazará (según su discreción) cualquier unidad que haya sido encontrada con algún defecto dentro del límite de garantía de un año.

Los productos DB Drive Euphoria instalados por un distribuidor de DB Drive Euphoria recibirá (2) años de garantía.

Esta Garantía limitada no se extiende a unidades que hayan sido sujetas a un mal uso, abuso, negligencia, o accidente. Productos que según DB Drive™ muestran evidencias de haber sido alterados, modificados, o utilizados sin la autorización de DB Drive™ serán rechazados de cualquier tipo de garantía.

Para obtener servicio de garantía, favor de comunicarse con su proveedor o visítenos a nuestro sitio www.dbdrive.net para más detalles.