

MANUAL for JS500



LOG ON Co., LTD.

The contents could be changed to enhance the performance without notice.



Main Body Front FHD Cam Cable with Micro SD MMCX Con



4m Coaxial



SD Card (16G)



Power Cable
(3 Pin Connector Type)

Options



Rear FHD Cam



6m Rear Cam Cable with 2.5Ø Plug



USB Wi-Fi Dongle



Cigar Power Cable



I/O Cable

3pin I/O Cable

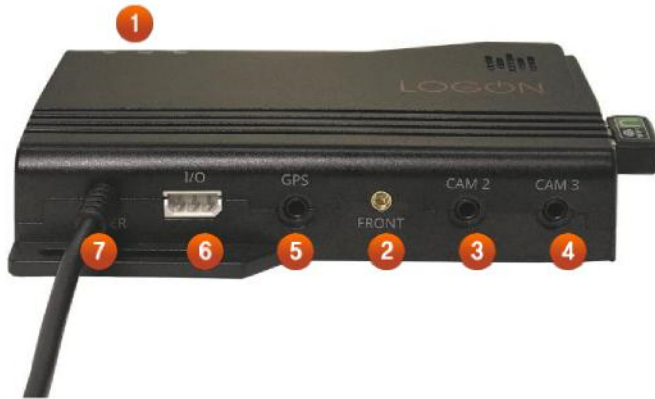


GPS

External GPS Receiver

PART DESCRIPTIONS

EXTERIOR



1 Status LED	LEDs showing system operating status
2 Front Cam Port	Front external camera connecting port (SMBL)
3 Cam 1	Rear external camera connecting port
4 Cam 2	Rear external camera connecting port
5 GPS	External GPS Receiver connecting port
6 I/O Port	Data Input & Output cable connecting port
7 Power	Power Jack Port
8 Wi-Fi Port	Wi-Fi Port /Connecting USB Wi-Fi Dongle here
9 Speaker Hole	Sound
10 SD Card Slot	SD Card Slot
11 Reset	Initialize the system

- **Before Install**

Note

1. Please set configuration and make sure JS500 is working correctly before installation.

2. Please check and confirm the proper spot before installation.

**3. JS500 is designed as hidden installation type on small size
It can be installed in Glove box, Bonnet, Dash Board and under Driving seat...etc.**

1. Please check and confirm the proper spot for external camera before installation.

Small size external camera also can be installed with special 3M double side from tape on various spots such as window, roof and room mirror...etc.



1 Insert Micro SD

Insert Micro SD card into the SD card slot on the main unit. Before start the system, Micro SD card must be inserted. Please be sure to insert Micro SD Card correctly as the image.

NOTE

JS500 is using format free file system to provide more secure file system and extend SD card life.

So, SD card must be formatted by JS500 exclusive PC viewer prior to use.

2 Connect Front Camera Cable

Connect Front Camera Cable into Front Camera Cable port on side of the main unit as the image.

Front Camera must be connected correctly to the main unit. Otherwise, the system is not working.

The other side of cable should be connected to the external camera.

3 Connect Rear Camera Cable

Connect Rear Camera Cable into Rear Camera Cable port on side of the main unit as the image.

The other side of cable should be connected to the external camera.



4 Connect GPS Receiver Cable

Connect GPS Jack into GPS port as the image.
Push the camera jack and rotate it to fit and fix the jack.



5 Connect Power Cable

After above installation process, please connect Power cable to the Power Port.
When Power comes in, Status LED will lighting or blinking. (Refer to the next page for more details.)



GPS & WiFi Working Status LED

- When GPS is connected correctly and activated, Green LED will be blinking at 3 second interval.

Power LED

- When Power is connected correctly, Red LED will be ON

Recording Working Status LED

- When camera is connected and recording correctly, Green LED will be blinking at 2 second interval. (Event 1 sec interval)

6



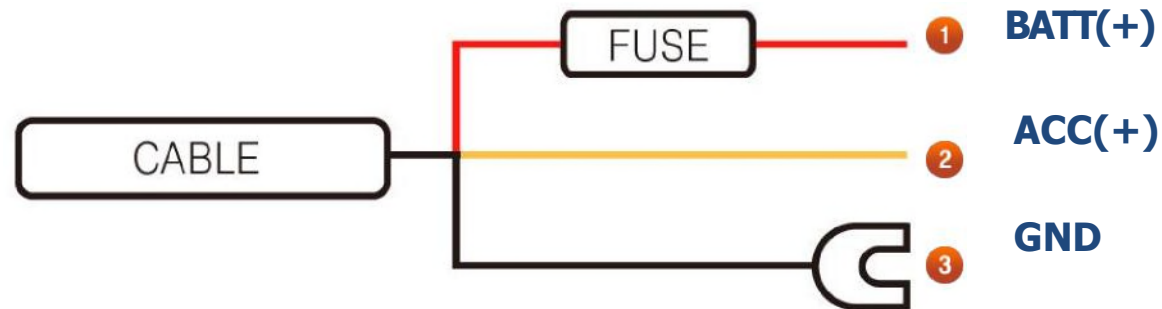
Adjust Camera Angles

6

Records video for several minutes and check the camera angles through the video view angles.

You can play the recorded video on your Smart Phone or PC Viewer.

DIRECT BATT. CONNECT



- 1 Red Wire BATT(+)**
Connects Red wire of Power cable provided to regular Car Power in Fuse Box.
(Ex : Emergency Lights, Interior Lights, Tale Lights...etc.)
- 2 Yellow or White Wire ACC(+)**
Connects Yellow or White Wire of Power Cable provided to the fuse that power comes in when engine is started.
(Ex : Cigar Lighter, Audio)
- 3 Black Wire**
This is Ground. Connects it with metal parts of vehicle, such as metal bolt, screw...etc. as the image.



※ Wire color may be changed by circumstances of wire provider.



1 Starts System

When connected to power , "Red" , "Green" & "Blue" LEDs are on while the system is booting up. (Voice : System is starting)



2 Closes System

- 2 If you stop using the system and disconnect power, it records additional 1 seconds, and three LEDs are turned On. And three LEDs goes to Off when the system is completely shut down. Note) Micro SD Card memory must be removed after LEDs are Off.



3 Recording Status LED

- 3 When "GRN" LED is Blinking at every 2 second, it indicates that recording is in progress. When the normal event occurs "GRN" LED will blink at every 1 second .



4 GPS Reception

When "BLU" LED is ON, it indicates that the GPS connected, When GPS is 3D fix, "BLU" LED blinking once at 3 second intervals

5 LED on Each Mode



- Normal Mode
 - "RED" LED is always On.
 - "GRN" LED indicates that recording is in progress.
When the normal record mode , LED is blinking once at every 2 seconds.
When the normal event occurs, LED is blinking once at every 1 second.



- Parking Mode
 - "RED" LED is blinking once (1 second) at every 2 seconds
 - "GRN" LED is blinking once during 20 seconds, when the Parked impact or motion event occurs.



Recording Mode

Recording Mode by Power Conditions

Condition	ACC	Rec. Mode	Descriptions
Engine OFF -. ON	OFF-.ON	Normal Mode	Normal Rec. Mode starts after 20 sec of engine on
	OFF-.OFF	Parking Mode	Parking Rec. Mode starts after 20 sec of Normal Recording
Normal Rec. -. Engine OFF	ON-.OFF	Parking Mode	Parking Rec. Mode starts after 20 sec of ACC OFF
Parking Rec. -. Engine ON	OFF-.ON	Normal Mode	Normal Rec. Mode starts within 20 sec of ACC ON
Parking Mode -. Low Temp.	OFF-.OFF	Power OFF	Power shut down when battery voltage is lower than setting level.

Recording by Mode (refer Default setting)

	ACC	File Length	Recording Type	Overwriting	File Size
Normal Rec.	ON	60 Sec	Continuous Recording	0	150MB
Event Rec.	ON&OFF	20 Sec	Refer to Event Scenario	0	50MB
Parking Rec.	OFF	20 Sec	Impact, Motion	0	50MB

Recording Mode

File Name Generation

(Y: Year, M: Month, H: Hour, M: Minute, S: Second, D: Driving, P: Parking, DI : Driving , DE : Driving Event, PM: Motion Event, PE: Impact Event, PT : Time Lapse)

Driving	Normal	YYMMDD_HHMMSS_DI_1(2).MP4 / Saved in Normal Folder of SD
	Impact Event	YYMMDD_HHMMSS_DE_1(2).MP4 / Saved in Event Folder of SD
	Normal	YYMMDD_HHMMSS_PI_1(2).MP4 / Saved in Normal Folder of SD
Parking	Impact Event	YYMMDD_HHMMSS_PE_1(2).MP4 / Saved in Parking Folder of SD
	Motion	YYMMDD_HHMMSS_PM_1(2).MP4 / Saved in Parking Folder of SD
	Time Lapse	YYMMDD_HHMMSS_PT_1(2).MP4 / Saved in Parking Folder of SD

Recorded Video Spec

	Front	Rear
Resolution	FHD	FHD
Bit Rate	6/8/10Mbps	4/5/6Mbps
Angle	120	120
FPS	30/20/10	30/20/10
Video Format	H.264	
Video Type	MP4	
Audio Format	PCM	
File Format	NxFs	

START

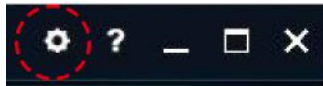
LED INDICATIONS

ITEM		Blue LED	Green LED	Red LED	LED Pattern	Blink Interval	Note		
Upgrade					Blinking/ Blinking/ON	0.5sec/0.5sec	2m30sec		
Bootng					OFF/ OFF / ON		20sec		
Driving Mode	GPS Disabled				OFF/ Blinking / ON	2sec	No GPS		
					ON / Blinking / ON	2sec	No 3D Fix		
	GPS Activated				Blinking / Blinking / ON	3sec / 2sec	3D FIX Status		
Parking Mode	Normal				Blinking/ OFF/Blinking	3sec / 2sec	Impact/Motion		
	Event				Blinking/ Blinking/Blinking	3sec/2sec/1sec			
	Time Lapse				Blinking/ Blinking/Blinking	3sec/2sec/1sec			
EVENT					Blinking/Blinking/ ON	3sec/1sec			
ERROR								Blinking/ON/ Blinking	3sec/3sec
	SD							Blinking/ON/2 Blinking	3sec/3sec
	Front Camera								
	Others								

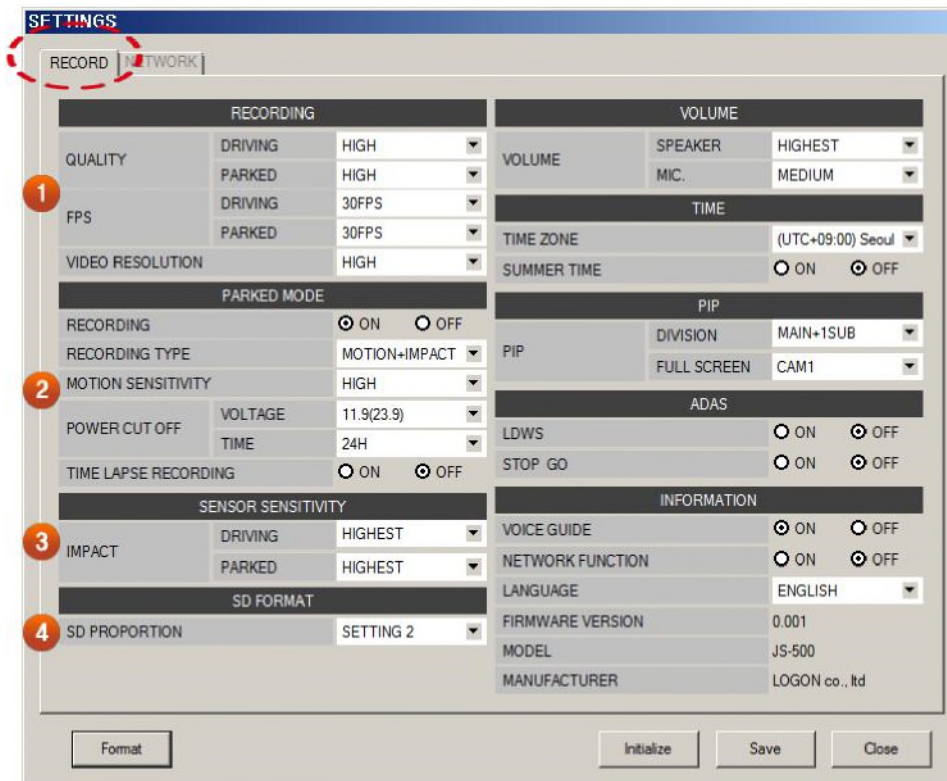
PC Viewer Guide



Configuration – Record Set



Insert Micro SD Card, and select SD card drive. Then Configuration Setting button will be activated, then click it and Configuration Setting window pops up. There are two Configuration Settings, for Black Box (DVR) and Network. In this part, Black Box Setting is explained.



- 1 **Video Quality / FPS (Video Frame Per Second for - CAM)**
 - Driving Default : High / Parking Default : Low
 - FPS Default : Driving 30FPS / Parking 15FPS
- 2 **Parking Mode Setting**
 You can set Parking Rec. triggering type and Power Cut Off option during Parking Mode.
- 3 **G Sensor Sensitivity**
 You can select 3D G-Sensor level among, Low, Middle, High on each mode, Driving and Parking, Server Report (Emergency Report Sensing Level)
 - Default Sensing value is Middle, high, Low.
- 4 **SD Card Option**
 You can set SD Card partition rate, SD Auto Format option.

SD Partition Rate Option

	Setting 1	Setting 2	Setting 3
Normal	28%	38%	48%
Event	50%	40%	30%
Parking	20%	20%	20%

Configuration – Record Set



SETTINGS

RECORD | NETWORK

RECORDING			VOLUME	
QUALITY	DRIVING	HIGH	VOLUME	SPEAKER
	PARKED	HIGH		HIGHEST
FPS	DRIVING	30FPS	MIC.	MEDIUM
	PARKED	30FPS		
VIDEO RESOLUTION		HIGH		
PARKED MODE			TIME	
RECORDING		<input checked="" type="radio"/> ON <input type="radio"/> OFF	TIME ZONE	(UTC+09:00) Seoul
RECORDING TYPE		MOTION+IMPACT	SUMMER TIME	<input type="radio"/> ON <input checked="" type="radio"/> OFF
MOTION SENSITIVITY		HIGH		
POWER CUT OFF	VOLTAGE	11.9(23.9)	PIP	
	TIME	24H	PIP	DIVISION
TIME LAPSE RECORDING		<input type="radio"/> ON <input checked="" type="radio"/> OFF		MAIN+1SUB
			FULL SCREEN	CAM1
SENSOR SENSITIVITY			ADAS	
IMPACT	DRIVING	HIGHEST	LDWS	<input type="radio"/> ON <input checked="" type="radio"/> OFF
	PARKED	HIGHEST	STOP GO	<input type="radio"/> ON <input checked="" type="radio"/> OFF
SD FORMAT			INFORMATION	
SD PROPORTION		SETTING 2	VOICE GUIDE	<input type="radio"/> ON <input checked="" type="radio"/> OFF
			NETWORK FUNCTION	<input type="radio"/> ON <input checked="" type="radio"/> OFF
			LANGUAGE	ENGLISH
			FIRMWARE VERSION	0.001
			MODEL	JS-500
			MANUFACTURER	LOGON co., Ltd

8 Format

Initialize Save Close

5 Volume Control

You can set Mic. Volume recorded with video on it. The level is 5 steps, and the default is Middle.

6 Time

You can set Time Zone

7 Information

You can set Speed, Video Out, Firmware update, Language option. And also check system information

Network function should be set to OFF.

8 FORMAT

JS500 is using NxFs file format for Format Free and SD card using FAT must be formatted with this format button prior to use.

Just Click this format button.

When completes the configuration setting, click "Save" button to save into Micro SD Card. And insert the SD card to JS500 device and the values will be reflected when the device starts booting.

To initialize all the values to the default, click "Initialize" button.

Configuration – Record Set

The screenshot shows the 'RECORD NETWORK' configuration page. A callout box highlights the 'NETWORK FUNCTION' setting, which is set to 'ON'. The interface includes several sections:

- SERVER ADDRESS:** TRACKING (IP: 211.253.31.40, PORT: 8090) and MEDIA (IP: 211.253.31.40, PORT: 8070).
- NETWORK SERVICE:** IMAGE CAPTURE NO (2 CUTS), EVENT AUTO REPORT (ON), SYNC SERVER TIME (ON), and FOTA FTP (IP, PORT, ID, PASSWORD).
- EVENT REPORT:** REPORT (IMPACT, MOTION, GEOFENCE, EMERGENCY) with ALERT and IMAGE checkboxes.
- WIFI BACKUP:** WIFI (SSID: U+NetF747, PASSWORD: 1000014180) and WIFI BACKUP (IP, PORT, ID, PASSWORD).
- WIFI SETTING:** MODE (STATION) and IMEI NUMBER (358709051312345).
- BACKUP FOLDER:** FOLDER (DRIVE, EVENT, PARK, PHOTO) with checkboxes.

Please select Network Function "On" on Record Setting page to activate Network Setting Page as the image left. And select "Station" Mode.

- 1 Type the IP address and port of destination server Receiving uploaded data.
- 2 **Select the below option.**
 1. Image Capture No. :
You can select the number of still cut image to upload.
 1. Event Auto Report
You can activate or inactivate Event Automatic Report option.
If select "On", event report will be uploaded whenever event occurs.
 1. SYNC Server Time - Synchronizing Time with Server
 4. FOTA FTP (Firmware Over The Air)
Type the address of FTP containing Firmware to upgrade device.
- 3 **Event Report Option**
You can select the Event and Data Type along with Report triggering level.

Configuration – Network Set

INFORMATION

VOICE GUIDE ON OFF

NETWORK FUNCTION ON OFF

LANGUAGE ENGLISH

RECORD NETWORK

1 SERVER ADDRESS

TRACKING	IP	211.253.31.40
	PORT	8090
MEDIA	IP	211.253.31.40
	PORT	8070

2 NETWORK SERVICE

IMAGE CAPTURE NO 2 CUTS

EVENT AUTO REPORT ON OFF

SYNC SERVER TIME ON OFF

FOTA FTP

IP

PORT

ID

PASSWORD

3 EVENT REPORT

REPORT	IMPACT	<input checked="" type="checkbox"/> ALERT	<input checked="" type="checkbox"/> IMAGE
	MOTION	<input type="checkbox"/> ALERT	<input type="checkbox"/> IMAGE
	GEOFENCE	<input checked="" type="checkbox"/> ALERT	<input checked="" type="checkbox"/> IMAGE
	EMERGENCY	<input checked="" type="checkbox"/> ALERT	<input checked="" type="checkbox"/> IMAGE

SENSOR SENSITIVITY 3

4 WIFI BACKUP

WIFI	SSID	U+NetF747
	PASSWORD	1000014180
WIFI BACKUP	IP	
	PORT	
	ID	
	PASSWORD	

5 WIFI SETTING

WIFI MODE **STATION**

IMEI NUMBER 358709051312345

6 BACKUP FOLDER

FOLDER	DRIVE	<input type="checkbox"/>
	EVENT	<input checked="" type="checkbox"/>
	PARK	<input type="checkbox"/>
	PHOTO	<input type="checkbox"/>

Please select Network Function "On" on Record Setting page to activate Network Setting Page as the image left. And select "Station" Mode to use Router or WIFI Backup feature.

4 WIFI Backup

1) WIFI

To upload data to destination server via WIFI Router, type the information of WIFI Router.

1. WIFI BACKUP

To backup data to Backup Server through WIFI, type the backup server information.

5 WIFI SETTING

1. WIFI

To use WIFI Router or WIFI Backup, select "STATION" mode.

If wants to identify the device, you may need to put IMEI number. (It may need to be customized by server protocols.)

If wants to use just WIFI function on your Smartphone with WIFI App, please select "AP" Mode.

6 BACKUP FOLDER

You can select the folder in SD Card to be uploaded to backup server.

When configuration is done, please click "Save" button below of the page, and take SD card and insert to JS500, then power on. Then, the setting will be reflected on JS500.

14 App Download & Connect Wi-Fi

- Access “Google Play”(Access “App Store” for iOS)
- Search “JSDVR” and install it.
- Run App and connect Wi-Fi as below images.
(Default Password is “12345678”)



Run JSDVR

Confirm Wi-Fi connection

Connect JS500-xxxxxx on Wi-Fi list

Access Main Menu

15 Live View



Select “live view”



Front & Rear Cam Live View (Rear is IR Cam Video)

Switch Front and Rear Cam View

16 Video File Search and Play & Save

Select "Video Search"

Select video file connection

Select Play or Save

Save

17 Play Video Downloaded

Select "Video Downloaded"

Select file

File Name

Switch Front and Rear Cam Video

18 Configuration

Category	Items	Setting
1.Video	Rec. Quality	Low, Middle, High
	Driving Mode	0~3
2.Sensing Level	Parking Mode	0~3
	F-Cam Motion	0~3
	R-Cam Motion	0~3
	Time Lapse	On/Off
3.Audio	Volume(Speaker)	Low, Middle, High
	Audio Rec.	On/Off
	Voice Guide	On/Off
4.Date & Time	Black Box Date Setting	
	Time Zone Setting	-12 ~ +14
5. Parking Mode	Voltage Cut Level	(11.7/23.7), (11.9/23.9), (12.1/24.1), (12.3/24.3)
	Voltage Cut Time	Continue, Power Off after 6/12/24/48 Hours
6.Network Setting	Parking Mode	On/Off
	Change Wi-Fi Password	
7.ADAS	LDWS	On/Off
	Stop & Go	On/Off
8.System	SD Card Format	
	SD Card Partition	Preferred Driving / Parking / Event
	Initialize	
	Language	Korean,English,Chinese



Self Diagnose

Self-Diagnosis

NOTE
(Please read when sets Network)



Self Diagnosis

● Video has not been recorded.

Please check Micro SD, and also check if SD card has been formatted to NxFS format(Format Free) prior to use. Micro SD Card has a life cycle. If you use it too long, it may be working incorrectly. Please format it regularly.

● Voice is not recorded.

Please check Black Box Setting if it has been set on Mute. If the device is installed in the place blocked such as Glove box, Bonnet or below interior, the voice volume recorded may be lower. If connects with external Microphone through I/O port, the recorded voice would be louder.

● Power is not supplied.

Please put the power cable out, and connect it again. If it is still not available, please contact our local dealer or A/S center.

● Cant not copy files on Micro SD Card.

Please format SD card and try again. If it is still not working after format, contact your local dealer or A/S center.

● Video brightness is too dark

Video brightness may be too dark if installs the camera under tint. Please install again without tint or control the brightness to High on Viewer Player when you play the video file.

● GOOGLE is not available.

JS500 is using external GPS receiver through cable. Please check if the cable is connected correctly with the main device.

And also please check if the GPS receiver is placed under Tinted window. Tinting will interfere GPS reception. Please place GPS receiver on the correct place again.

● Camera is not available.

JS500 is using external Front FHD camera through Coaxial cable with MMCX Con and Rear FHD camera through cable with 2.5Ø stereo Plug.

Please check if the cable is connected corrected, and also check if there is any obstacles on camera direction.

● Recorded Video is vibrating.

Please check if the camera is firmly fixed. If not, please make it fixed with double side form tape or screw.

● Recorded Video is not clear.

Please check if there is any dust or foreign obstacle on camera lens and window.

Then, please clean them and record again.

Thank you!

Published by LOG ON

201-B, 17 ManAnro, ManAngu, Anyang City, Kyunggido, Korea

Tel. +82 31 347 8223, Fax. +82 31 443 0630

www.Log-On.co.kr | Info@Log-On.co.kr